

The Situation of Children and Young People at the Regional Level in Russia

Prepared by Russia Country Statistical Team
Co-ordinator: Irina Zbarskaya
State Committee of the Russian Federation on Statistics, Goskomstat of Russia

MONEE Country Analytical Report
November 2004

The project to monitor the impact of economic and social change on children in Eastern and Central Europe and the Commonwealth of Independent States (MONEE) was initiated at the UNICEF Innocenti Research Centre in 1992. The project seeks to monitor, analyse and disseminate information on economic and social trends affecting children's rights and wellbeing in countries in the region. A key feature of the Project is a network of correspondents in the 27 National Statistical Offices (NSOs). On an annual basis these correspondents complete an extensive data template which in turn is used for calculating indicators, supporting research of the project and, in due course, being made publicly available as the TransMonee database and in tables and graphs of the Innocenti Social Monitor.

For a number of years, each participating NSO prepared a Country Analytical Report based on extensive outline from UNICEF IRC on a different theme on the situation of children every year. These analytical reports have provided valuable input into the research at UNICEF IRC and, as significantly, have also served as important national documents on monitoring aspects of child wellbeing in the countries. Some of these Country Analytical Reports have been issued by the NSOs (in the national language) as part of their publication programme.

UNICEF IRC attaches great value to these national assessments of the situation of children and is committed to promote the efforts, including through translating the reports into English (where the submitted report has been in Russian) and offering its website to make them accessible to a wider research audience. The Country Analytical Reports are owned and authored by the National Statistical Offices and are not the intellectual property of UNICEF (see below).

The opinions expressed are those of the authors and do not necessarily reflect the policies or view of UNICEF. The text has not been edited for official publication standards and UNICEF accepts no responsibility for errors. The designations in this publication do not imply an opinion on legal status of any country or territory, or of its authorities, or the delimitation of frontiers.

Children and Young People in Russia (Regional Profile)

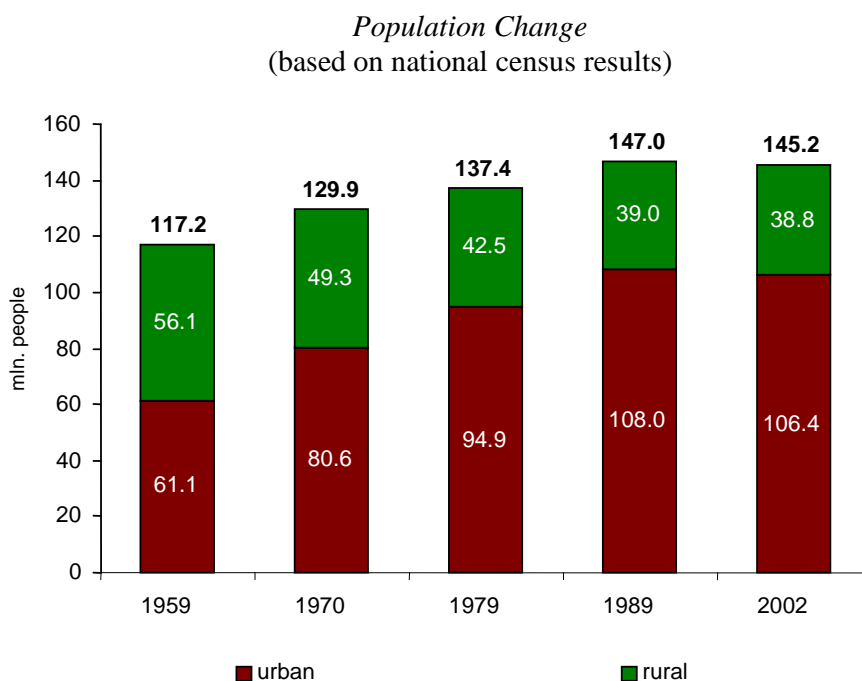
Introduction

The 2002 National Census returns provide a unique source of information to describe the current situation of children and young people in Russia, to analyze the ongoing processes and identify basic trends in the country's demographic and social development over the past decade.

Under its Constitution the Russian Federation has 89 constituent entities, or subjects (21 republics, 10 autonomous areas, one autonomous region, 6 territories, 49 regions and 2 federal cities) geographically grouped into seven federal districts (FD): the North-West FD, the Central FD, the South FD, the Volga FD, the Urals FD, the Siberian FD and the Far East FD. By the time of the 2002 National Census the 89 subjects included 1866 districts, 1098 cities, 1842 urban communities, and 155289 rural communities.

Distribution of the Population and Demographic Trends

According to the National Census conducted as of 9 October 2002, the population of the Russian Federation was **145.2 million people**.



As compared to data of the 1989 census, the **population decreased** by 1.8 million, including by 1.6 million in urban and 0.2 million in rural communities.

The population change is the sum total of the following components:

	<i>Total population decrease from 1989 to 2002</i>	<i>Natural population decline</i>	<i>Including</i>		<i>Migration related growth</i>	<i>Including</i>	
			<i>births</i>	<i>deaths</i>		<i>incoming</i>	<i>outgoing</i>
Total population, million	-1.8	-7.4	20.5	27.9	+5.6	11.0	5.4

A basic cause of the population decrease was natural population decline (the number of deaths minus the number of births). Since 1992, given the natural population decline, migration has been the only source of Russia's population replenishment. Even in 1994 when the migration inflow reached its peak of 0.8 million persons in the last three decades, it was not sufficient to offset the natural population decline. From 1989 to 2002 three quarters of the total natural decline was counterbalanced by migration inflows from abroad, largely from the CIS member-countries and Baltic states.

The previously intensive urbanization process had virtually come to a halt during the last inter-census period with the ratio between urban and rural populations remaining at the 1989 level of 73 and 27%, respectively.

The urban to rural population ratio was influenced by substantial changes in the administrative-territorial system effected in subjects of the Russian Federation from 1989 to 2002. By decision of the authorities of the Russian Federation subjects and local governments the status of urban settlements was changed (incorporation of urban settlements as towns and reclassification of towns as urban settlements), while some urban settlements were reclassified as rural ones and vice versa.

The population of the Russian Federation is made up of residents of 2940 urban communities (cities, towns and urban settlements) and 142,000 rural settlements.

Changes in the distribution of the urban population are illustrated by the following figures:

<i>Urban community category</i>	<i>Number of urban communities</i>		<i>Number of urban community residents, thousand</i>		<i>Number of residents, 2002 in % of 1989</i>	<i>Number of residents, % of the total</i>	
	<i>1989</i>	<i>2002</i>	<i>1989</i>	<i>2002</i>		<i>1989</i>	<i>2002</i>
Total urban communities including:	3230	2940	107959	106429	98.6	x	x
towns and cities, including with the population, thousand:	1037	1098	94450	95916	101.6	100.0	100.0
below 50	709	768	15920	16622	104.4	16.9	17.3
50–99.9	163	163	11169	11083	99.2	11.8	11.6
100–249.9	87	92	13078	13817	105.6	13.8	14.4
250–499.9	44	42	15084	14574	96.6	16.0	15.2
500–999.9	22	20	14040	12404	88.3	14.9	12.9
1 million and more	12	13	25159	27416	109.0	26.6	28.6
urban settlements, including with the number of residents, thousand:	2193	1842	13509	10513	77.8	100.0	100.0
below 5	1119	988	3144	2543	80.9	23.2	24.2
5–9.9	713	582	5049	4108	81.4	37.4	39.1
10–19.9	321	247	4262	3231	75.8	31.6	30.7
20 and more	40	25	1054	631	59.8	7.8	6.0

More than 90% of the urban population live in cities and towns; the rest of them live in urban settlements. In the inter-census period the number of cities increased by 61 as 66 urban settlements and four rural settlements were incorporated as cities, and the city of Magas (capital city of the Ingush Republic) was registered as a new community, while 9 towns became part of larger cities and one town was reclassified as a rural settlement. The number of cities as well as their population increased in the group of small (below 50,000 residents), big (from 100,000 to 250,000) and largest cities with a population in excess of one million.

While small towns with the population below 50,000 are prevalent in the Russian Federation (768, or 70% of the total), their population accounts to a mere 17% of the townspeople. The average number of residents per one such town is 22,000.

More than a third of townspeople are residents of 13 major cities with a population over one million each: Moscow, St. Petersburg, Novosibirsk, Nishny Novgorod, Yekaterinburg, Samara, Omsk, Kazan, Chelyabinsk, Rostov-on-Don, Ufa, Volgograd and Perm.

The number of urban settlements decreased by 351. This was due to the abolition of 432 urban settlements (329 were converted into rural settlements and 42 into cities, 46 were annexed by other urban communities, and 15 were disestablished) and the formation of 81 settlements (44 reclassified urban communities, 32 reclassified rural settlements and 5 newly built settlements). A greater part of the population (63%) live in urban communities with a population of less than 10,000.

The distribution of the rural population is illustrated by the following figures:

Rural settlement category	Number of rural settlements		Number of rural residents, thousand		Number of residents, 2002 in % of 1989	Number of residents, % of the total	
	1989	2002	1989	2002		1989	2002
Total rural settlements, including:	162231	155289	39063	38738	99.2	100.0	100.0
Unpopulated	9309	13086	-	-	x	x	x
Populated, including with the population of	152922	142203	39063	38738	x	x	x
10 and less	30170	34003	155	168	108.9	0.4	0.4
11–50	44674	38073	1150	950	82.6	3.0	2.5
51–100	18094	14901	1312	1082	82.5	3.4	2.8
101–500	40072	36308	9710	8919	91.9	24.8	23.0
501–1000	11524	10836	8087	7571	93.6	20.7	19.5
1001–3000	6984	6402	10819	9996	92.5	27.7	25.8
3001 and more	1404	1680	7830	10052	128.2	20.0	26.0

During the inter-census period the number of populated rural settlements decreased by some 11,000. This was due to the abolition and exclusion from records, pursuant to relevant decisions passed by the authorities of Russian Federation subjects, of rural settlements vacated as a result of their residents moving to other locations (urban or rural) or of the natural population decline. The census, however, registered 13,000 unpopulated rural settlements as some of them were not yet covered by such abolition decisions and others could not be formally abolished because while having no *de facto* population they still had *de jure* population.

The outflow and natural decline of the population resulted in the growing number of small communities with 10 residents or less. These are for the most part “dying-out villages” inhabited primarily by old people above the active working age and having no or poor social and economic infrastructure. Half of the rural population live in major rural settlements with 1,000 and more inhabitants.

According to the 2002 census data, marked changes occurred in the age pattern (age structure) of the population. A dramatic drop in the birth rate which began in the late 1980s – early 1990s resulted in the population ageing process. As compared to the 1989 census the average age of the population increased by 4.3 years to reach 37.1. The growth was 3.6 and 34.1 years for men and 4.6 and 39.8 years for women, respectively.

The age pattern changed as follows:

	<i>Thousand persons</i>						<i>Share of the total, %</i>	
	<i>1989</i>			<i>2002</i>			<i>1989</i>	<i>2002</i>
	<i>Both genders</i>	<i>including</i>		<i>Both genders</i>	<i>including</i>			
		<i>men</i>	<i>women</i>		<i>men</i>	<i>women</i>		
Total population, including in the age bracket, years:	147022	68714	78308	145167	67605	77562	100	100
0-9	23392	11897	11495	13340	6825	6515	15.9	9.2
10-19	20560	10491	10069	23207	11817	11390	14.0	16.0
20-29	22312	11330	10982	22079	11097	10982	15.2	15.2
30-39	24547	12294	12253	20052	9939	10113	16.6	13.8
40-49	15618	7543	8075	24153	11578	12575	10.6	16.6
50-59	17992	8173	9819	15419	7008	8411	12.2	10.6
60-69	12870	4608	8262	14328	5695	8633	8.8	9.9
70-79	6986	1830	5156	9809	3070	6739	4.8	6.8
80 years and more	2660	508	2152	2660	516	2144	1.8	1.8
Within the total – at the age of:								
under active working age (men and women under 16)	35995	18288	17707	26327	13452	12875	24.5	18.1
active working age (men 16-59 years, women 16-54 years)	83746	43440	40306	88942	44812	44130	56.9	61.3
over active working age (men 60 years and more, women 55 years and more)	27196	6946	20250	29778	9281	20497	18.5	20.5

Population older than the active working age increased by 2.6 million (by 9.5%) over the intercensus period. Over the same period, the number of children and adolescents fell by 9.7 million persons (by 27%). An especially dramatic drop (by 43%) occurred in the age group of children under 10 (generations born in the past decade when the birth rate was at its lowest in post-war Russia).

as a result of a lower children demographic load, in rural areas the retirement age demographic load also decreased.

In the inter-census period, the working-age population's share of the total dropped by 4.4 percentage points down to 61%. The highest share of working-age population is found in Khanty-Mansi and Yamal-Nenets autonomous areas (over 70%). The demographic load ratio in these subjects of the Russian Federation is the lowest in the country: 420 and 419 persons older than the working age, respectively, per 1000 working-age population.

High birth rates in a number of Russian Federation subjects were behind the high demographic load ratio. For instance, in the Chechen Republic the demographic load ratio is 658 children and adolescents per 1000 of working-age population, 617 in the Ingush Republic, 541 in the Republic of Tyva, and 540 in Ust-Ordynsky (Buryat) Autonomous Area.

At the same time, a low share of senior citizens (below 10%) of the total population in the Ingush Republic, Chechen Republic, Republic of Tyva, and in Khanty-Mansi, Yamal-Nenets, Taimyr (Dolgan-Nenets), Evenk and Chukchi autonomous areas is attributable primarily to their departure to the central areas of the Russian Federation.

A significant share of population in Voronezh, Ivanovo, Ryazan, Tambov, Tula and Pskov regions are older than the active working age, with one person in every four being of a retirement age.

According to the 2002 national census, there were 34 million married couples (as against 36 million in 1989). For the first time in the history of censuses, data on unregistered marriages were gathered. Three million married couples (10% out of the total number) had not officially registered their marriage.

The marital pattern of the population of 16 years and older looks as follows:

	<i>Both genders</i>		<i>Men</i>		<i>Women</i>	
	<i>1989</i>	<i>2002</i>	<i>1989</i>	<i>2002</i>	<i>1989</i>	<i>2002</i>
Population at the age of 16 and older, thousand, including:	111027	118720	50425	54093	60602	64627
Never married	17859	24917	9882	13599	7977	11318
Married	72477	67868	36224	33901	36253	33967
Widowed	12295	13580	1270	1930	11025	11650
Separated, divorced	7977	11183	2848	4088	5129	7095
Per 1000 in the age group of 16 and older						
Never married	161	210	196	251	132	175
Married	653	572	718	627	598	526
Widowed	110	114	25	36	182	180
Separated, divorced	72	94	57	76	85	110

It could be noted that 4,200 persons under 16 indicated that they were married, of whom 2,300 described their relationship as common-law marriage.

From the early 1980s the number of registered marriages showed a downward trend. Having reached the record low in 1989-1995 the process then relatively stabilized. Slightly over one million marriages were registered in 2002 (1.4 million in 1989). The share of repeated marriages in the inter-census interval remained steady – at 25 to 28% of the total number of marriages concluded.

The spread of common-law marriages increased the number of children born out of wedlock. From 1989 to 2002 the share of such children doubled to reach almost 30% of the total number of births per year (almost half of them were registered on the basis of a joint statement by both parents).

The number of the never married increased by 40% during the inter-census period and the same growth rate was shown by the number of separated persons. In recent years some 800,000 marriages were dissolved annually (as against 583,000 divorces in 1989), and as a result some 400,000 minors were left in the care of only one parent. Young couples married for less than five years account for over one third of divorces. This has increased the divorcees' share in the marital pattern of the population, especially among women who have less opportunities to remarry due to the population's gender and age-group imbalances.

The processes in the marital pattern of the population affected the number and composition of households. For the first time since the 1897 census a household rather than a family was taken as a statistical unit. The 2002 census recorded some 53 million private households with 142.8 million persons as their members, or 98% of Russia's total population. In terms of size the households are distributed as follows:

	<i>All localities</i>	<i>including</i>		<i>% of the total</i>		
		<i>urban</i>	<i>rural</i>	<i>all localities</i>	<i>urban</i>	<i>rural</i>
Total households, thousand,	52711	39236	13475	100	100	100
including households consisting of:						
1 person	11741	8768	2973	22.3	22.3	22.1
2 persons	14535	10871	3664	27.6	27.7	27.2
3 persons	12537	9803	2734	23.8	25.0	20.3
4 persons	8944	6615	2329	17.0	16.9	17.3
5 persons	3032	2035	997	5.8	5.2	7.4
6 persons	1166	722	444	2.2	1.8	3.3
7 persons and more	756	422	334	1.4	1.1	2.5
Average household size, persons	2.7	2.7	2.8	x	x	x

The small size of the average household is explained by a large number of households with no more than 3 members; such households account for almost three quarters of all private households.

The census also recorded 2.3 million persons in children's homes, boarding schools for orphans and children left without parental care, asylums for the disabled and retirement homes, hospitals for patients suffering from chronic diseases, monasteries and nunneries, army barracks, prisons and other institutions.

The census returns confirmed once again that Russia is one of the world's major multiethnic states.

In accordance with the Constitution of the Russian Federation, the ethnic identity was indicated by the respondents themselves on the basis of their selfidentification and recorded by the counters exactly as they were told. The census returns contain over 800 different kinds of answers to the question about ethnicity, which in many cases differed only in spelling due to dialectal variations or locally accepted names of ethnic groups. After the processing of census returns the answers given to the question about ethnic selfidentification were classified into 142 major ethnic groups and 40 smaller groups within them.

Changes in the numbers of the more numerous peoples were as follows¹:

¹ Listed in the decreasing order, as of 2002.

	<i>Thousand</i>		<i>2002 % of 1989</i>	<i>% of the total</i>	
	<i>1989</i>	<i>2002</i>		<i>1989</i>	<i>2002</i>
Total population	147022	145167	98.7	100	100
Russians	119866	115889	96.7	81.5	79.8
Tatars	5522	5555	100.6	3.8	3.8
Ukrainians	4363	2943	67.5	3.0	2.0
Bashkirs	1345	1673	124.4	0.9	1.2
Chuvashes	1774	1637	92.3	1.2	1.1
Chechens	899	1360	1.5 times	0.6	0.9
Armenians	532	1130	2.1 times	0.4	0.8
Mordovians	1073	843	78.6	0.7	0.6
Avars	544	814	1.5 times	0.4	0.6
Belorussians	1206	808	67.0	0.8	0.6
Kazakhs	636	654	102.8	0.4	0.5
Udmurtians	715	637	89.1	0.5	0.4
Azeri	336	622	1.9 times	0.2	0.4
Maris	644	604	93.9	0.4	0.4
Germans	842	597	70.9	0.6	0.4
Kabardinians	386	520	134.7	0.3	0.4
Ossetians	402	515	128.0	0.3	0.4
Darghins	353	510	144.4	0.2	0.4
Buryats	417	445	106.6	0.3	0.3
Yakuts	380	444	116.7	0.3	0.3
Kumyks	277	422	1.5 times	0.2	0.3
Ingushes	215	413	1.9 times	0.1	0.3
Lezgins	257	412	1.6 times	0.2	0.3

Changes in the ethnic composition during the inter-census period were caused by three factors. The first one has to do with differences in the natural population changes reflected in the vital statistics. The second factor is the external migration processes brought about by the disintegration of the USSR. The third factor is the changes in the ethnic selfidentification due to mixed marriages and other phenomena.

In 2002, there were 23 most numerous ethnic groups, in excess of 400,000 members, whereas in 1989 there were 17 such groups. Owing to the population growth these were joined by Azeri, Kabardinians, Darghins, Kumyks, Ingushes, Lezgins and Yakuts, while Jews dropped out of this category due to the decrease in numbers. As in 1989, the size of seven peoples exceeded 1 million but the pattern of the group underwent certain changes during the inter-census period: Chechens and Armenians joined the group, while Belorussians and Mordovians left it.

Ethnic Russians are still most numerous (nearly 116 million) accounting for almost 80% of the total population. As against 1989 their share of the country's total population went down by 1.7 percentage points. This was largely due to the natural population decline by almost 8 million for which the migration-related growth of ethnic Russian population – slightly above three million – failed to make up.

Tatars – 5.55 million (almost 4% of the country's total population) – are the second most populous ethnic group, as they were at the time of the previous census.

As a result of emigration and natural population decline, a decrease was recorded in the number of Jews (from 0.54 million down to 0.23 million) and Germans (from 0.84 million down to 0.60 million).

The growth of the number of Armenians (from 0.53 million up to 1,13 million), Azeri (from 0.34 million up to 0.62 million), Tadjiks (from 0.04 million up to 0.12 million) and Chinese (from 5,000 up to 35,000) was chiefly due to the inflow of migrants.

Situation in the Economy and Finance

The historically heterogeneous socioeconomic environment in Russia has significantly affected the functioning of the state, the pattern and efficiency of the economy, the strategy and tactics of institutional transformations and socioeconomic policies. The interregional dissimilarities became more pronounced in the context of growing crisis phenomena in the economy and transition to market reforms.

This has to do, firstly, with the activation of the market competition mechanism that has divided the regions according to their competitive advantages and disadvantages; different levels of adaptivity to the market environment became evident in regions with differing economic structures and mentalities of both the population and the authorities. Secondly, the regulatory role of the state has weakened significantly, which led to cuts in government investment in regional development and abolition of most economic and social compensatory transfers to the regions.

As a result, the gap between subjects of the Russian Federation in terms of per capita production of the gross regional product and per capita incomes of the population reached 20 times in some cases. The highest per capita level of the gross regional product is registered in Tyumen Region, including the autonomous areas which are part of it, Moscow and Republic of Sakha (Yakutia). The regions with the lowest per capita gross regional product include the republics of Ingushetia, Daghestan, Adygeya, Karachayevo-Cherkess, Mari El, Chuvash, Altai and Tyva, as well as Ivanovo, Bryansk, Penza and Kurgan regions.

This sharp differentiation inevitably expands depressed and poor areas, weakens interregional economic cooperation mechanisms and enhances interregional contradictions.

The current economic environment in the Russian Federation comprises a great number of larger and smaller territories, each with its distinctive anomalies, the so-called problem areas – those with a dramatic decline in production and living standards of the population.

The group of lagging behind (underdeveloped) regions includes subjects of the Russian Federation the economic capacity of which, for objective and historical reasons, is several times lower than Russia's average, and the economies of which have long been stagnant, the industry insufficiently diversified and the infrastructure and social sphere underdeveloped. Specifically, this category includes a number of republics in the North Caucasus, the republics of Altai and Tyva, most autonomous areas (except the oil and gas producing ones), and some regions in different parts of the country.

The group of depressed areas in Russia with persistent and profound recession of economic activities and a dramatic fall in the living standards include some local pockets in old industrial regions, agro-industrial and certain mining areas in the central part of European Russia, the Urals, southern Siberia and the Russian Far East.

Problem regions also include a significant part of northern areas where typical negative factors (inclement climate, higher living, production and transport costs, vulnerable natural environment, etc.) are not counterbalanced by strong competitive advantages, such as abundant natural resources (oil and gas, diamonds, noble and non-ferrous metals, etc.). In order to alleviate the near-disastrous situation in some areas of the Far North (scaling-back basic production and support facilities,

significant unemployment rates, low incomes of the population, and difficulties with fuel and food supplies) targeted government assistance is needed.

The disintegration of Russia's common economic environment in the 1990s occurred as a consequence of the weakening of many of the well-established economic ties (especially between remote areas) and the substitution of international economic links for some of the interregional ones. The volume of interregional commodity exchanges fell significantly lower than the volume of production. The interregional passenger traffic has also substantially decreased.

A trend of the past few years towards overcoming the disintegration tendencies is attributable above all to the economic recovery (particularly in the manufacturing industry and investment) and import substitution processes. In the context of production growth, its diversification and modernization, growth of the small business and better local investment climate, economic performance in a number of subjects of the Russian Federation has significantly improved over the recent years. Since 1999 the growth of interregional commodity exchange has outstripped that of the GDP.

Along with the improving socioeconomic situation and financial stabilization the share of budget expenditures on the social and cultural sphere has also been growing. For instance the share of this budget item in the total consolidated budget expenditures (summarized budgets of all levels of the budget system, i.e. the federal budget and the budgets of the Russian Federation's subjects) grew from 22% in 1992 to 36% in 2002. In the expenditures on the social sphere and culture in 2002, education accounted for 30.2%; health care and physical training, for 18.7%, and social policies, for 46.1% .

The shares of the federal budget spending and budget expenditures of the Russian Federation's subjects for social and cultural purposes also changed. Whereas in 1992 such expenditures out of the federal budget accounted for 29% and out of the budgets of the federation subjects for 71%, in 2002 the figures were 46 and 54%, respectively.

Living Standards

The National Census returns relating to distribution of the population according to sources of livelihood reflect regional variations in the living standards of the population, including children and young people.

In the 2002 census questionnaire people could indicate all sources of livelihood unlike the 1989 census in which no more than two sources could be mentioned. In the 2002 census 12 categories of sources of livelihood were listed, including income from work (other than income from a personal subsidiary plot), income from a personal subsidiary plot, educational scholarship, pension (other than disability pension), disability pension, benefits (other than unemployment benefit), unemployment benefit, other public benefits, savings, income from property leasing or letting, dependency or another source.

In 2002, more than 62 million (43% of the country's population) indicated income from work as their source of livelihood (almost 50% in 1989). This source of livelihood was given by 59 million persons of working age (66.2% of the total working age population), 3.2 million persons older than active working age (10.9% of the total population), and 22,000 persons below working age.

Among the working age population the highest share of those who indicated income from work as their source of livelihood was registered in the Chukchi Autonomous Area (76.2%), the Yamal-Nenets Autonomous Area (75.3%), the Khanty-Mansi Autonomous Area – Yugra (73.7%), Moscow Region (73.5%), Nizhny Novgorod Region (73.4%), and the Udmurt Republic (73.3%);

the lowest was in the Republic of Ingushetia (15.8%), Chechen Republic (23.5%), Republic of Daghestan (36.4%), Karachaevo-Cherkess Republic (41.2%), and Republic of Tyva (45.2%).

For almost 48 million persons of active working age this kind of income was the only source of livelihood (53.8%). The highest share of population indicating income from work as their only source of livelihood was found in the Yamal-Nenets Autonomous Area (70%), the Khanty-Mansi Autonomous Area – Yugra (68.4%), Moscow Region (68.1%), the city of Moscow (66.8%), and the Nenets Autonomous Area (63.0%).

The emerging new economic relations affected the labour market and generated a new category – the unemployed (unemployment last featured in the 1926 census). Throughout Russia 1,171,000 of the working age population (1.3%) were unemployment benefit recipients in 2002.

The highest share of working age recipients of unemployment benefits was recorded in the Chechen Republic (20.4%), Koryak Autonomous Area (11.9%), Republic of Ingushetia (10.5%), Republic of Daghestan (6.3%), and Republic of Tyva (4.8%). The lowest share was registered in the city of Moscow (0.4%), Orenburg Region (0.4%), Tver Region (0.5%), the city of St. Petersburg (0.5%), and Smolensk Region (0.5%).

Pension (other than disability pension) was indicated as a source of livelihood by recipients of retirement (old age) pension, survivor's pension, long service pension, and social pension. In the Russian Federation, 32 million, or 22% of the total population, indicated pension (other than disability pension) as a source of livelihood.

The highest shares of pension (other than disability pension) recipients were recorded in Pskov (27%), Ryazan (27.1%), Tver (27.5%) and Tula (29.2%) regions. The lowest share was found in the Republic of Ingushetia (8.1%), Yamal-Nenets Autonomous Area (8.2%), Chechen Republic (9.5%), Khanty-Mansi Autonomous Area – Yugra (10.0%), Republic of Daghestan (11.1%), and Tyumen Region (13.2%).

The number of benefit (other than unemployment benefit) recipients was more than 16 million, or 11.5% of the total population. The overwhelming majority of benefit recipients are children (the average age of persons who indicated this source was 11.9). Such benefits are paid to children under 16 years of age whose parents are evading child maintenance payments; children of single mothers; women eligible to a child care allowance for babies under 18 months and some others.

The highest share of benefit recipients was recorded in the Republic of Ingushetia (35%), Chechen Republic (32.9%), Republic of Daghestan (32.9%), as well as in the Aginsky Buryat Autonomous Area (32.6%), Ust-Ordynsky Buryat Autonomous Area (30.3%), and the Republic of Tyva (30%). Their share is lowest in the city of Moscow (2.6%), the Khanty-Mansi Autonomous Area – Yugra (4.5%), Republic of Tatarstan (4.9%), St. Petersburg (5.4%), Leningrad Region (6.0%) and Tyumen Region (6.6%).

In 2002, more than 18 million of respondents (12.5%) named personal subsidiary plots as a source of subsistence.

The highest share of persons indicating income from a personal subsidiary plot as a source of livelihood was found in the Aginsky Buryat Autonomous Area (66.7%), Ust-Ordynsky Autonomous Area (48.2%), and the Republic of Altai (45.6%); the lowest share was registered in the city of Moscow (0.5%), the Yamal-Nenets Autonomous Area (0.8%), Chukchi Autonomous Area (1%), Taimyr (Dolgan-Nenets) Autonomous Area (1.1%), and the city of St. Petersburg (1.2%).

In the 2002 census 1976 persons, or 1.4%, indicated another kind of public benefit as a source of subsistence. These are children in children's homes, students of boarding schools; persons living in old people's homes and asylums for the disabled, and other institutions.

The census returns showed that the population also relies on other sources of subsistence, such as savings (350,000 persons), including income from securities, and proceeds from leased or let out property (225,000); previously these sources were recorded under other headings.

Almost one third of the population (43.5 million) are dependent on other persons. The overwhelming majority of them (over 80%) are children and young people under 25. The dependants' average age is 16.7 years.

The highest share of dependants among the population was found in the Republic of Daghestan (50.5%), Republic of Tyva (50.2%), Kabardin-Balkar Republic (46.6%), and Republic of Kalmykia (46.0%). Their share is lowest in the cities of Moscow (22.8%) and St. Petersburg (23.1%), and in Moscow (24.5%) and Vladimir (25.0%) Regions.

The census returns showed a growing share of the population relying on more than one source of livelihood: 29% of the population had more than one source (26% had two sources, 1.5% had three sources, and 0.04% had four or more sources) in 2002, whereas at the time of the 1989 census only 14% had two sources of livelihood.

Living standard indices for families with children are determined above all by general trends in the country's economy. Certain economic growth-related positive features have been observed in this sphere in recent years. Take-home cash incomes and real wages have been growing, and the ratio between the population's incomes and the minimum subsistence level reached 2.14 (the highest for the last 5 years). However, the gap between per capita incomes of 10% of the wealthiest population and 10% of the poorest population is still great (14.3 times in 2003). As compared to 1992 the difference has almost doubled.

In 2003 the population with per capita incomes below the minimum subsistence level was 29 million, or 20% of the total population. The share of this population category fell by 14% down from the 1992 level. The share of poor households among households having children is traditionally higher than among households in general. Households with many children find themselves in the most difficult situation, as well as single-parent families with two or more children.

Over a long period considerable regional variations have been observed in the poverty levels across the country with the highest in the republics of Ingushetia and Kalmykia, Ivanovo Region, and the Komy-Permyak, Ust-Ordynsky Buryat, Aginsky Buryat and Evenk autonomous areas.

Education

The 2002 census recorded 109.4 million people aged 15 and more as having basic, general or higher education, or 90.2% of this age group. As against 1989 the number of persons having educational levels referred to above had grown by 18.3 million, or by 20%.

The education level dynamics among the population aged 15 and more looks as follows:

	Thousand		2002 % of 1989	Per 1000	
	1989	2002		1989	2002
Total population aged 15 and more, including with:	113038	121300	107.3	1000	1000
<i>Professional or vocational training</i>					
higher (including postgraduate) education	12740	19379	152.1	113	160
incomplete higher education	1929	3740	193.8	17	31
secondary education	21714	32929	151.6	192	271
primary education	14686	15367	104.6	130	127
<i>General education</i>					
secondary (complete) education	20256	21276	105.0	179	175
basic education	19789	16695	84.4	175	138
primary education	14574	9350	64.2	129	77
<i>Lacking primary general education</i>	7323	1200	16.4	65	10

Of the total population aged 15 and more 71.4 million (59%) have professional or vocational training (higher, secondary and primary). From 1989 to 2002 the number of specialists with higher education increased by 6.6 million (by 52%); with secondary vocational training, by 11.2 million (by 52%); with primary vocational training, by 0.7 million (by 5%).

The largest share of population having professional or vocational training was recorded in the North-Western, Central, Far Eastern and Urals federal districts. Especially advanced in this respect are the cities of Moscow and St. Petersburg, and the Khanty-Mansi and Yamal-Nenets autonomous areas where this group accounts for more than 65% of the population.

The lowest number of persons having professional or vocational training was registered in the South and Siberia federal districts. These include the Chechen Republic (less than 30%), and the Republic of Ingushetia, Republic of Dagestan, Aginsky Buryat and Ust-Ordynsky Buryat autonomous areas where their share varies from 40% to 47%.

The number of persons with secondary (complete) education increased by one million (by 5%). At the same time the number of persons aged 15 and more with basic general and primary education went down.

Changes in the educational level occurred as a more numerous generation born in the first half of the 1980s entered the age group of 15 and more and a large part of them continued upgrading their education level.

For instance, according to 1989-2002 statistics 7.1 million specialists with higher education and 8.3 million with secondary professional training graduated from educational institutions during that period. Hence the higher level of higher and secondary vocational training among the young people. The number of young people with higher education in the 16-29 age group went 42.4% up on the 1989 figure, and those having secondary vocational training, 7.5%. Of every 1000 persons in this age group 112 had higher education (84 in 1989) and 224, secondary vocational training (223 in 1989).

At the same time the number of young men and women in the 16-29 age group having only primary general education grew 2.1 times to reach 0.5 million during the inter-census period and 70% of them do not study.

The share of illiterate population aged 10 and more dropped from 1.9% in 1989 to 0.5% in 2002. 67% of the illiterate are persons aged 60 years and more. The rest of the illiterate population are for the most part seriously physically or mentally handicapped.

According to the 2002 census returns, 92.7% of the urban population and 83.2% of the rural population have basic general or higher-level education. This rate was the highest among the urban population of the Far Eastern Federal District and the lowest in the Siberian Federal District. Among the rural population the education level was the highest in the Far Eastern Federal District, and the lowest in the Central Federal District.

Eight urban residents in every ten aged 15 years and more have complete secondary or higher-level education. This is 26% more than in the rural population where only six in every ten persons have a similar level of education. In the countryside one in almost every five residents over 15 years of age has no primary general education or has only primary general education. This is 3 times the figure for urban areas where one in every seventeen residents has such a low level of education.

The highest educational levels were registered in the Far Eastern FD both in the district as a whole and among urban and rural populations taken separately. Most outstanding results were registered in the Republic of Sakha (Yakutia) and Magadan Region, with more than 82% of residents having complete secondary and higher-level education. Overall, in the Far Eastern FD the gap in the level of education between urban and rural population was the lowest: the number of urban residents having complete secondary or higher-level education is 12.2 percentage points higher than the number of rural residents with a similar education level, while the number of rural residents having only primary general or lower-level education is more than twice the number of urban residents with the same education level. A similar situation is observed in the South FD.

The gap between urban and rural population in terms of their education level is the highest in the Central FD, with the number of townspeople having complete secondary or higher-level education 19 percentage points higher than the number of rural residents with the same education level. And the greatest gap of almost 24 percentage points was recorded in Kursk and Ryazan regions and the lowest, of 7.6 percentage points, in Moscow Region. In the Central FD the share of rural population having only primary general or lower-level education is 3.5 times as big as share of the urban population with the same education level. A similar situation is observed in the North-West FD. In the Central and North-West FD a high educational level of the urban population, especially in the cities of Moscow and St. Petersburg, with the highest level of higher and postgraduate education, stands in contrast to a low education level of the rural population. Due to this sharp contrast the Central and the North-West FD do not on the average show high education levels.

In the rest of the RF subjects (Siberia, Volga and Urals FD) while the overall education level in a federal district is low, the gap between urban and rural population in terms of complete secondary and higher-level education is large: some 16.9 percentage points on the average.

For the first time the census provided information on preschool education covering 3.1 million children in the age group of 3 to 6 years (or 60% of the total number of children in this age group), including 2.4 million children (70%) in urban communities and 0.7 million children (40%) in the countryside. In the age group of 6 to 9 years 4.7 million (82%) attend general education establishments, while 11% of children in this age group still go to preschool institutions (in case of older age groups these are generally institutions for physically or mentally retarded children). Among children and adolescents of 7 to 15 years old the census recorded 277,000 children (1.6%) outside educational or preschool institutions.

Health

In recent years the incidence of all basic types of illnesses, other than contagious and parasitic diseases, among Russia's population was growing, and as compared to the 1990 level it has grown in all diseases except the respiratory ones. Generally, the number of newly diagnosed patients (with all diseases) in the past year went 15% up from the 1990 level.

Whereas in the early 1990s more than half of new patients had respiratory diseases, in 2003 the figure was about 40%. This was due to the lower incidence of respiratory diseases and a simultaneous growth in the incidence rates of other types of diseases. These are followed by new patients with injuries, poisoning/intoxication and some other effects of extraneous factors, although their share has slightly decreased as well. Nervous and sense organs disorders are the third most frequent kind of new patient cases (their share in the total incidence rate has grown).

Newly diagnosed disease incidence in the adult population is generally the same as in the population at large, and it has remained at a highest level in recent years. Typically, incidence rates of almost all diseases is on the upwards, primarily of cardiovascular, oncological, musculoskeletal diseases and injuries, intoxication, and some other extraneous effects. The number of obstetrical and postnatal disorders has grown.

The general and nosological disease incidence among children under 18 keeps growing. Respiratory diseases account for almost 60% of the total.

Especially concerning is caused by high incidence rates of “social ill-being diseases” both infectious and non-infectious. These include tuberculosis in the first place. The rate of tuberculosis incidence may be to a certain extent indicative of the socio-economic situation in a country or region. The tuberculosis growing incidence and mortality rates observed in recent years have been conditioned by a number of reasons. Of critical importance here is a general global factor – the emergence of drug resistant and, consequently, far less susceptible to treatment strains. Another factor is of a purely Russian dimension: due to financial constraints faced by health care facilities tuberculosis is detected at the extensive rather than early stage: 40% of the newly detected patients are at a stage of pulmonary decomposition. Living conditions in detention facilities have an extremely unfavourable impact on the inmates. An analysis of the social status of tuberculosis patients shows a growing share of retired and disabled persons and former prisoners, declassed and other socially excluded population groups.

The fast growing tuberculosis incidence rate has slowed down in recent years. However many of new patients come to see a doctor when they are already at an advanced stage of the disease. For instance, in 2001 an advanced stage was found in 46% of all patients with detected respiratory tuberculosis.

While the situation in Russia has certain common features with other, including western, countries it has certain regrettable distinctive features. In the late 1980s, a decline in the number of new patients stopped and in some areas it has even started to gain momentum. However, the growth of tuberculosis incidence rates, unfortunate in itself, had not led to higher death rates either in Western or Eastern Europe. In many republics of the former Soviet Union, Russia included, death rate started to grow almost simultaneously with the incidence rate increase, while in others only the mortality rate went up.

In Russia over a period of 11 years, from 1991 to 2002, the number of newly detected active tuberculosis cases increased 2.53 times and the number of deaths from tuberculosis, 2.47 times. i.e. almost synchronously. Moreover, mortality rates began to increase even before the growth in the number of newly infected patients.

In 2001, for the first time after 1990, a slight reduction in tuberculosis incidence among the adult population was recorded, including lung tuberculosis.

Tuberculosis in children has a similar history. In 1991 the number of diagnosed cases began to grow and reached its peak in 1994 with the incidence rates increasing in all of its varieties, including lung

tuberculosis. A certain drop in the number of recorded newly diagnosed cases of lung tuberculosis was registered in 1995 but starting from 1996 it began to climb up again.

The second and far greater peak in child tuberculosis incidence of 19.1 per 100,000 persons under 15 occurred in 2001. The incidence rate among teenagers of 15 to 17 years was much higher. In 2001 it was 36.3 per 100,000, and in 2002 it went down to 33.3.

Tuberculosis incidence rates vary geographically. A 2002 analysis of incidence in federal districts of the Russian Federation showed an almost twofold difference in active tuberculosis rates between the Central and North-West federal districts, on the one hand, and the Siberian Federal District, on the other.

A very serious situation with sexually transmissible diseases persists despite a certain downward trend that has emerged in recent years.

The syphilis rates, even following a decline observed since 1998, was 120 cases per 100,000 in 2002, or 23 times as high as the 1990 level. Its incidence rate is especially high in a number of areas: in the Taimyr and Evenk autonomous areas the syphilis rate is 3.5 to 3.7 times Russia's average; in the Republic of Tyva the figure is 3 times; and in the Republic of Altai and the Buryat Republic, Khbarovsk Territory, Amur, Astrakhan, Kemerovo and Irkutsk regions, Jewish Autonomous Region and the Komi-Permyak Autonomous Area it is 1.6 to 2.4 times. But in the country at large the situation is improving.

The number of syphilis cases among children under 15 had been growing from 1993 on and by 1997 it increased 36.2 times. After 1998 a downward trend emerged but of late the decline slowed down. Teenagers of 15 to 17 demonstrated a 10-fold syphilis rate that reached 126.7 per 100,000 but in 2002 it dropped down to 106.2.

The HIV/AIDS incidence rates are growing. The first HIV-infection case was recorded in Russia in 1987. For a decade after that Russia had been among the countries with a low level of HIV infection with only 1086 cases registered by 1996. In most cases the infection was sexually transmitted and spread largely among homosexuals. In 1989 and 1990, there were several dozen cases of nosocomial infection of children in the south of Russia (in Kalmykia, Stavropol Territory, Rostov and Volgograd regions).

The subject of a HIV epidemic in Russia was brought up in 2000 when 51592 HIV/AIDS cases were diagnosed in just one year, including 386 children of 14 years and younger. From the beginning of registration in 1987 a total of 83054 persons were put on the list, including 1147 children. In 2002 and 2003 the number of newly diagnosed HIV and AIDS cases went down. According to the Federal Research and Methodological Centre for the Prevention and Control of AIDS, as of 1 January 2003, 228917 persons, including 5896 children infected with the human immunodeficiency virus were registered in the Russian Federation; and 804 of them, including 191 children, had AIDS.

In the past few years the HIV incidence in Russia has been growing among women who account for over 20% of the total number of HIV-infection cases. Sixty percent of HIV-infected women are 20 to 30 years of age. As a result the number of babies born by HIV-infected mothers has been also growing every year.

The prevalence of HIV varies greatly in Russia's regions. There are still areas where not a single HIV case was recorded. These are the Nenets and Aginsky Buryat autonomous areas. Isolated cases have been registered in the Koryak, Evenk, Chukchi and Komi-Permyak autonomous areas.

According to 2002 statistics, the higher number of newly-diagnosed HIV cases were registered in Samara (116.7 per 100,000), Sverdlovsk (93), Irkutsk (97.3), Chelyabinsk (69.7) and Tyumen (78.1) regions.

In 2003 life expectancy continued to fall in Russia. As compared to 1990 it decreased by 5 years (from 63.8 to 58.8 years) for men and by 3.3 years (from 74.3 to 72 years) for women. Whereas general mortality rate was growing, infant mortality was steadily going down but its level is still higher than in developed countries. The lowest mortality rate as compared to other age groups was among children of 5 to 14 years, yet this is above the developed countries' level.

The region-specific variations in mortality rates of children from 5 to 14 years of age clearly reflect a "North-East to South-West gradient". Higher death rate of children under 5 is observed in the South Federal District.

The higher mortality rates among infants during the first year of life were recorded in the Chukchi Autonomous Area (29.7 per 1000 live births), Nenets Autonomous Area (28.6), the Republic of Tyva (28.1), Ingush Republic (26.8), and the Jewish Autonomous Region (22.8). These regions also have Russia's highest mortality rate of children from 1 to 5 years of age.

